

CALBRITE™ STAINLESS STEEL CONDUIT SYSTEMS

Food and Beverage Market



Atkore™
Calbrite

Stainless Steel Conduit Systems for Food, Beverage and Dairy

Critical to Food Safety

- Eliminate product safety and contamination issues
- Stainless steel conduit systems hold up best against today's intense washdown pressures, chemical concentrations and temperatures
- Stainless steel is easy to clean, corrosion and damage resistant, easy to sanitize making it the best choice for meeting HACCP and ASME food safety standards
- UL and NSA listed for safety and sanitation
- Stainless steel stands up to acidic chemical washdowns, resists pitting and stress corrosion cracking
- Stainless steel is easily sterilized to prevent bacteria growth in support of USDA Pathogen Reduction rules



Why Calbrite?

- **Corrosion Resistance** - stainless steel alloys provide excellent resistance to corrosives at extreme temperatures in most industrial environments
- **Easy to install** - Calbrite products do not require any special tools
- **Lowest total cost of ownership** - For many applications, stainless steel has the lowest maintenance and total lifecycle of any cost UL Listed conduit material
- **Hygienic** - Stainless steel holds up against harsh chemicals and extreme temperatures during washdown procedures
- US-based distribution centers provide the fastest deliveries
- Industry's largest product offering of stainless steel conduit and accessories
- Standard, custom and unique products - Type 304 & 316 stainless steel
- QA program complies with UL, CUL, ANSI, NEMA, NSF standards



Trusted Worldwide by the Top Food, Beverage and Dairy Brands

Stainless Steel Conduit

- Rigid Conduit, Nipples & Elbows..... 1/2" - 6"
- IMC Conduit, Nipples & Elbows..... 1/2" - 2"
- EMT Conduit & Elbows 1/2" - 4"



Stainless Steel Flex Conduit & Fittings

- Bare Flex Conduit..... 1/2" - 2"
- PVC Coated Flex Conduit..... 1/2" - 2"
- Clear Coated Flex Conduit..... 1/2" - 2"
- Flex Connector Straights, 90's & 45's.... 1/2" - 2"
- Hygienic Flex conduit and fittings..... 1/2" - 2"



Stainless Steel Conduit Bodies

- Body Style Form 8: C, LB, LL, LR, TB, T, X
- Size Range..... 1/2" - 2"
1/2" - 4"



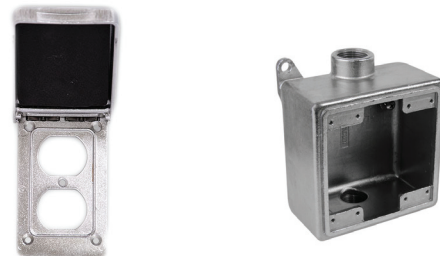
Stainless Steel Connectors

- Hub (Line Terminator)..... 1/2" - 4"
- Grounding Hub..... 1/2" - 4"
- Conduit Coupling..... 1/2" - 6"
- 3 Piece Coupling..... 1/2" - 4"



Stainless Steel Device Boxes & Covers

- Box Style: FD, FS, FDC, FDT, FST, FDX, FSX, FDCC & FSCC
- Stainless Steel In-Use weather proof covers
- Shallow and deep styles available
- Weather Proof Device Box Covers



Sanitary Struts

- BriteRail® Sanitary Strut..... 2' - 10'
- FlatRail Sanitary Strut Sanitary Strut. 2' - 10'
- Installation Accessories



Accessories

- Clamps, Brackets, Washers, Nuts, U-Bolts, Locknuts, Cover & Gasket Kits, Straps, Screws, Threaded & Grounding Rods, Rod Couplings, Conduit Caps, Box Connectors, Bushings, Pulling Elbows, Wedge & Drop-In Anchors, Clamp Backs & Spacers, Compression & Set Screw Connectors, Cord Grips, Plugs, Fender Washers, Escutcheon Plates, Floor Flange





Allied Tube & Conduit ▲ AFC Cable Systems ▲ Heritage Plastics ▲ Unistrut
Unistrut Construction ▲ Cope ▲ US Tray ▲ Calbrite ▲ Calbond ▲ Kaf-Tech
Columbia-MBF ▲ Eastern Wire + Conduit ▲ ACS/Uni-Fab ▲ Cii
Power-Strut ▲ Calconduit ▲ Razor Ribbon ▲ Calpipe Security
Vergokan ▲ Flexicon ▲ Marco

Atkore

6451 Northwind Pkwy
Hobart, IN 46342

TOLL FREE / 800-844-6884

FAX / 219-536-2248

atkore.com/calbrite

Want to join a company that helps you build
the mindset, skill set and tool set for success?
Visit us at atkore.com/careers